

# ERN-EYE



*The European Reference Network  
dedicated to Rare Eye Diseases*



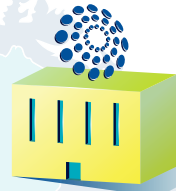
 Funded by the  
European Union

[www.ern-eye.eu](http://www.ern-eye.eu)

EN

# ERN-EYE

is a network dedicated to Rare Eye Diseases, the leading cause of visual impairment and blindness in children and young adults in Europe.



24 ERNs for all Rare Diseases

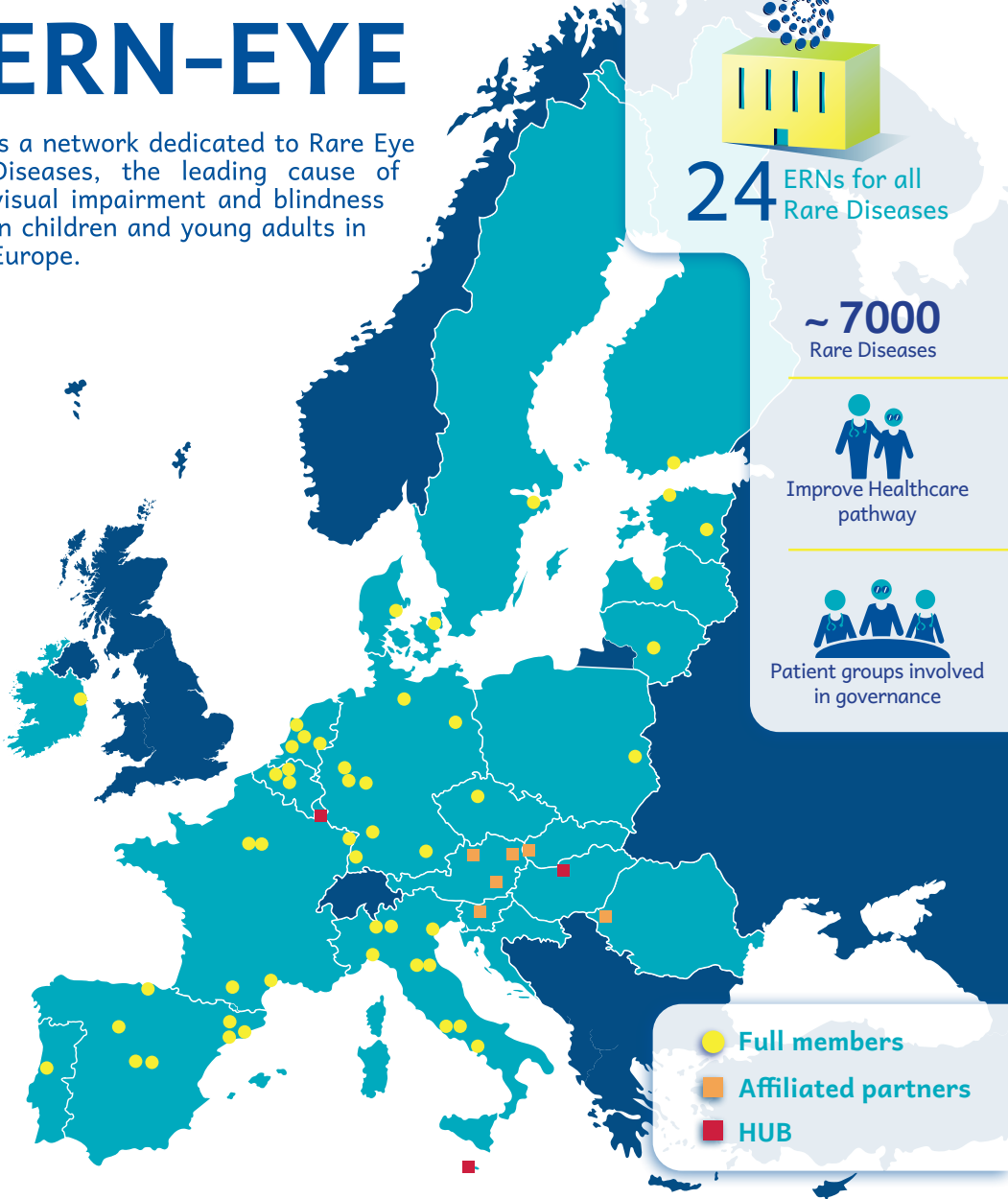
~ 7000 Rare Diseases



Improve Healthcare pathway



Patient groups involved in governance



ERNs are European reference networks developed by the European Commission, bringing together expert hospitals across Europe to improve access to highly specialised healthcare.

# The ERN-EYE network



52 Full Members



>900 Rare Diseases

6 main axes dedicated to Rare Eye diseases :



Paediatric Ophthalmology



Retinal



Neuro-ophthalmology



Anterior segment

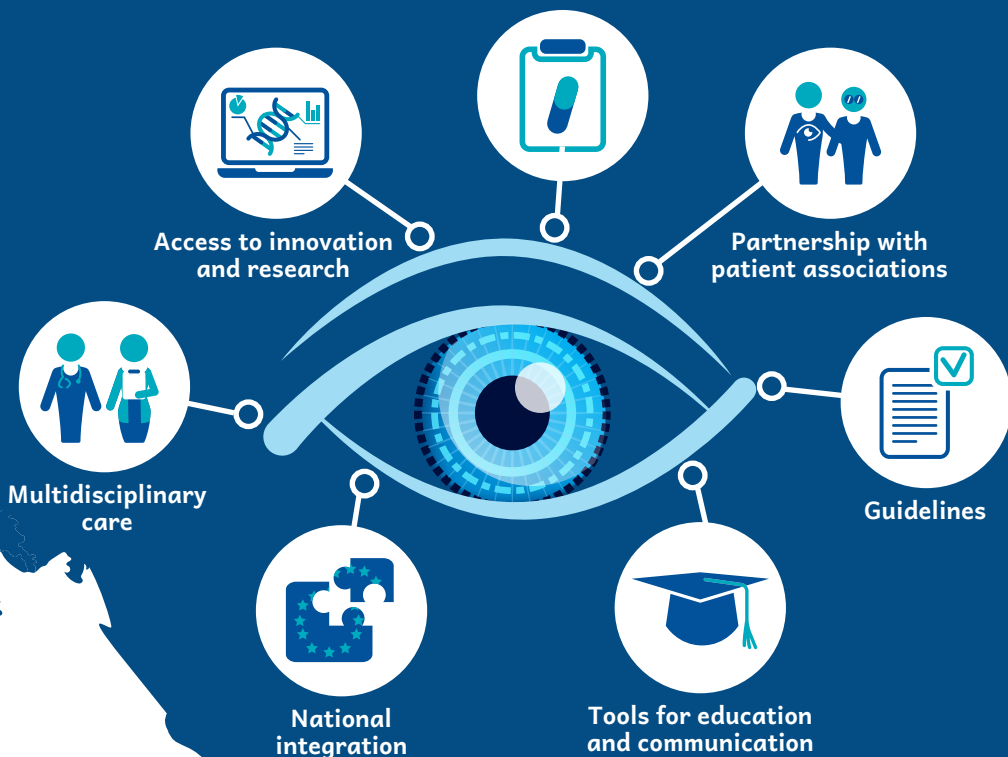


Genetic Testing



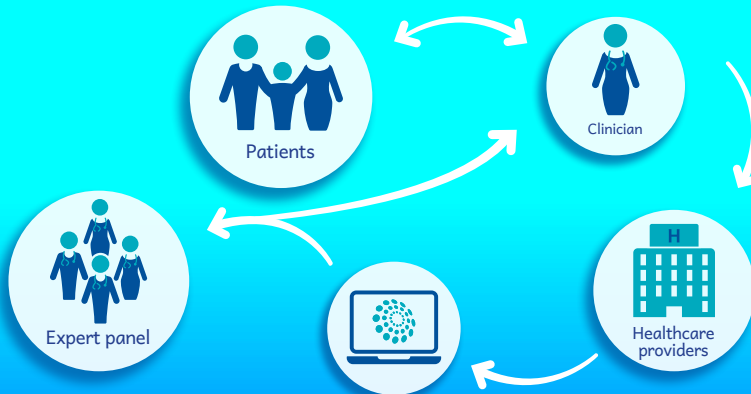
Low vision

## Clinical trials



# Clinical virtual care

One of the Networks main aim is the development of a virtual clinic to facilitate crossborder dissemination of expertise.



*Access to more ERN-EYE information*



[www.ern-eye.eu](http://www.ern-eye.eu)



[extranet](#)



<https://redgistry.eu>



[cmps.ern-net](http://cmps.ern-net)



[contact@ern-eye.eu](mailto:contact@ern-eye.eu)



 Funded by the European Union

