

BLIND AND VISUALLY IMPAIRED PEOPLE : PROTECTIVE MEASURES AT YOUR FINGERTIPS !

VIDEOS TO UNDERSTAND IT ALL

WASH YOUR HANDS PROPERLY

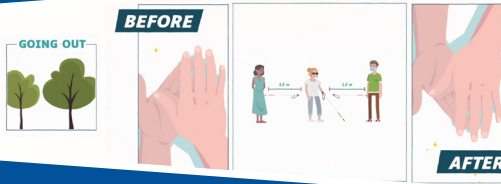
during an epidemic

HOW TO DO IT?

- ✓ Palms
- ✓ Between the fingers
- ✓ Back of your hands
- ✓ Fingertips
- ✓ Thumbs
- ✓ Wrists



30
SECONDS

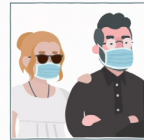


GOING OUT

during an epidemic

WEAR

a mask



MASK



HOW TO DO IT?

- ✓ Learn to fit it right way up
- ✓ Cover the nose
- ✓ Cover the chin
- ✓ Use the elastic straps to fit it

How to correctly use a MASK

Understand the PROTECTIVE MEASURES

To watch the video:





www.ern-eye.eu

SENSGENE
Maladies Rares Sensorielles



FILIÈRE DE SANTÉ MALADIES RARES

www.sensgene.com



www.aveuglesdefrance.org

