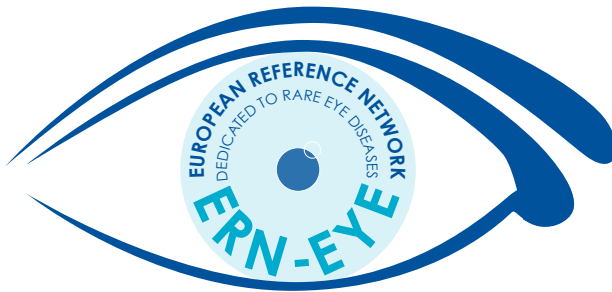


# ERN-EYE

---

THE EUROPEAN REFERENCE NETWORK  
DEDICATED TO RARE EYE DISEASES

---



European  
Reference  
Network

for rare or low prevalence  
complex diseases

 Network  
Eye Diseases (E -

For more information :

**[WWW.ERN-EYE.EU](http://WWW.ERN-EYE.EU)**



## ERNS - EUROPEAN REFERENCE NETWORKS

**24 ERNs** for all Rare Diseases.

**~ 7 000** Rare Diseases.

ERNs are **European reference networks** developed by the European Commission, bringing together expert hospitals across Europe to improve access to highly specialised healthcare.

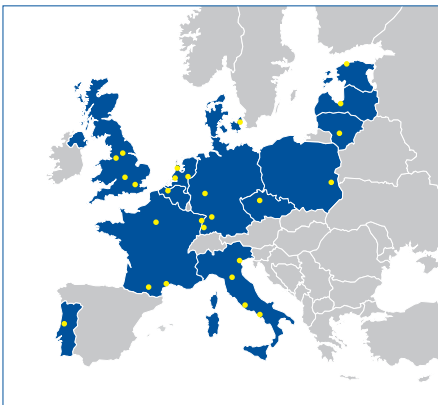
Improve Healthcare pathway.

Patient groups involved in governance.

## ERN-EYE - NETWORK DEDICATED TO RARE EYE DISEASES

ERN-EYE is a network dedicated to **Rare Eye Diseases**, the leading cause of visual impairment and blindness in children and young adults in Europe.

13 founding countries for ERN-EYE :



**> 900**  
Rare Eye Diseases.

 **29**  
HCPs.

6 main axes dedicated to  
Rare Eye diseases :



Pediatric  
ophthalmology.



Retinal.



Neuro-  
ophthalmology.



Anterior  
segment.

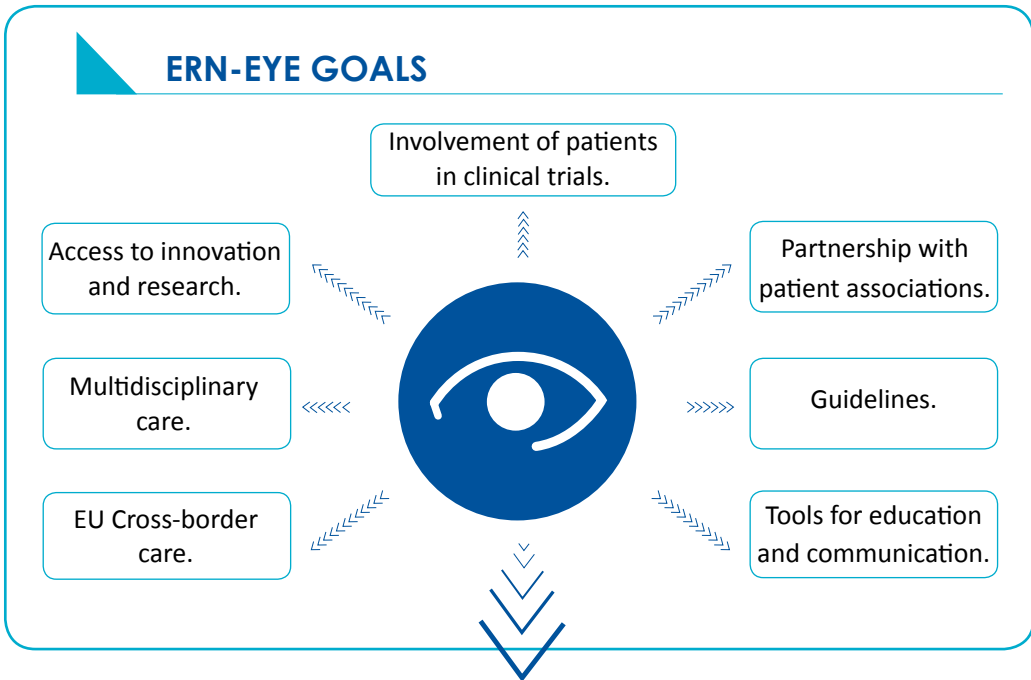


Genetic  
Testing.



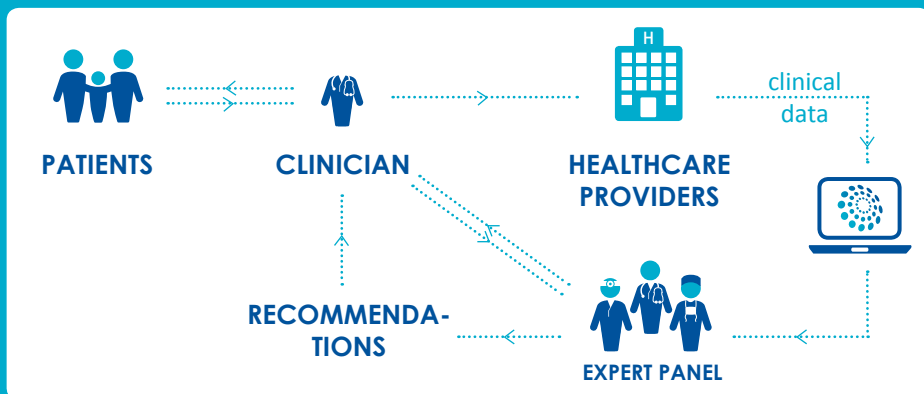
Low  
Vision.

## ERN-EYE GOALS



## CLINICAL VIRTUAL CARE

The Networks main aim is the development of a virtual clinic to facilitate **cross-border dissemination of expertise**.



## FOUNDING MEMBERS

### FRANCE

- University Hospital of Strasbourg, CARGO (coordinator).
- CHNO of Quinze-Vingts, Paris.
- CHU of Montpellier, CR Maolya.
- University Hospital NECKER, Paris, Ophtara.
- CHU of Toulouse Purpan, CRNK.

### BELGIUM

- Ghent University Hospital.

### CZECH REPUBLIC

- General University Hospital in Prague.

### DENMARK

- Rigshospitalet, Glostrup.

### ESTONIA

- Eye Clinic of East Tallinn Central Hospital.

### GERMANY

- Universitätsklinikum Gießen and Marburg GmbH.
- Eye Center, University Hospital Freiburg.
- Center for Ophthalmology, University Eye Hospital, Tübingen.

### LATVIA

- Children's Clinical University Hospital, Riga.

### LITHUANIA

- Hospital of Lithuanian University of Health Science, Kauno Klinikos.

### PORTUGAL

- Hospital and University Center of Coimbra, CHUC.

### ITALY

- Second University of Naples, Azienda Ospedaliera Universitaria.
- Careggi University Hospital of Florence.
- Bambino Gesù Children's Hospital of Rome.
- Azienda ULSS6 Euganea, Camposanpiero.
- Azienda ULSS3 Serenissima - Ospedale dell'Angelo Mestre - Fondazione Banca degli Occhi del Veneto.
- University Hospital of Padua.

### NETHERLANDS

- The Rotterdam Eye Hospital.
- Radboud university medical center, Nijmegen.
- Leiden University Medical Center.

### POLAND

- Medical University in Lublin.

### UNITED KINGDOM

- St. James's University Hospital, Leeds.
- Central Manchester NHS Foundation Trust.
- Oxford Eye Hospital, John Radcliffe Hospital, Oxford.
- Moorfields Eye hospital, London.

## COORDINATOR CENTER CONTACT

✉ [contact@ern-eye.eu](mailto:contact@ern-eye.eu)

☎ + 33 (0)3 88 11 67 55



Co-funded by the  
European Union

