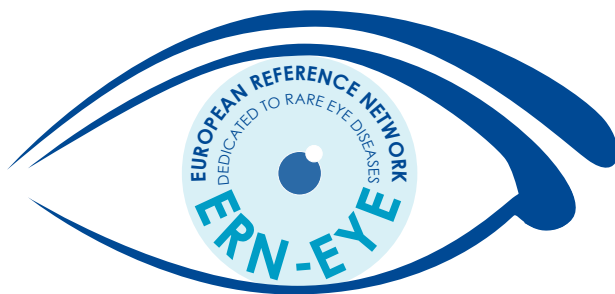




ERN-EYE

THE EUROPEAN REFERENCE NETWORK
DEDICATED TO RARE EYE DISEASES



European
Reference
Network

for rare or low prevalence
complex diseases

 **Network**
Eye Diseases (ERN-EYE)

For more information :

WWW.ERN-EYE.EU

Co-funded by the
European Union



ERNs - EUROPEAN REFERENCE NETWORKS

24 ERNs for all Rare Diseases

~ 7 000 Rare Diseases

ERNs are **European reference networks** developed by the European Commission, bringing together expert hospitals across Europe to improve access to highly specialised healthcare.

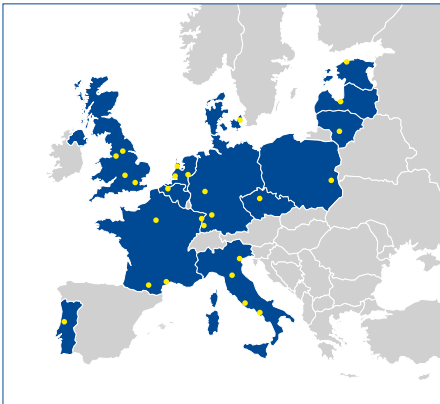
Improve Healthcare pathway

Patient groups involved in governance

ERN-EYE - NETWORK DEDICATED TO RARE EYE DISEASES

ERN-EYE is a network dedicated to **Rare Eye Diseases**, the leading cause of visual impairment and blindness in children and young adults in Europe.

13 founding countries for ERN-EYE :



> 900
Rare Eye Diseases

29
HCPs

6 main axes dedicated to
Rare Eye diseases :



Pediatric
ophthalmo-
logy



Retinal



Neuro-
ophthalmo-
logy



Anterior
segment

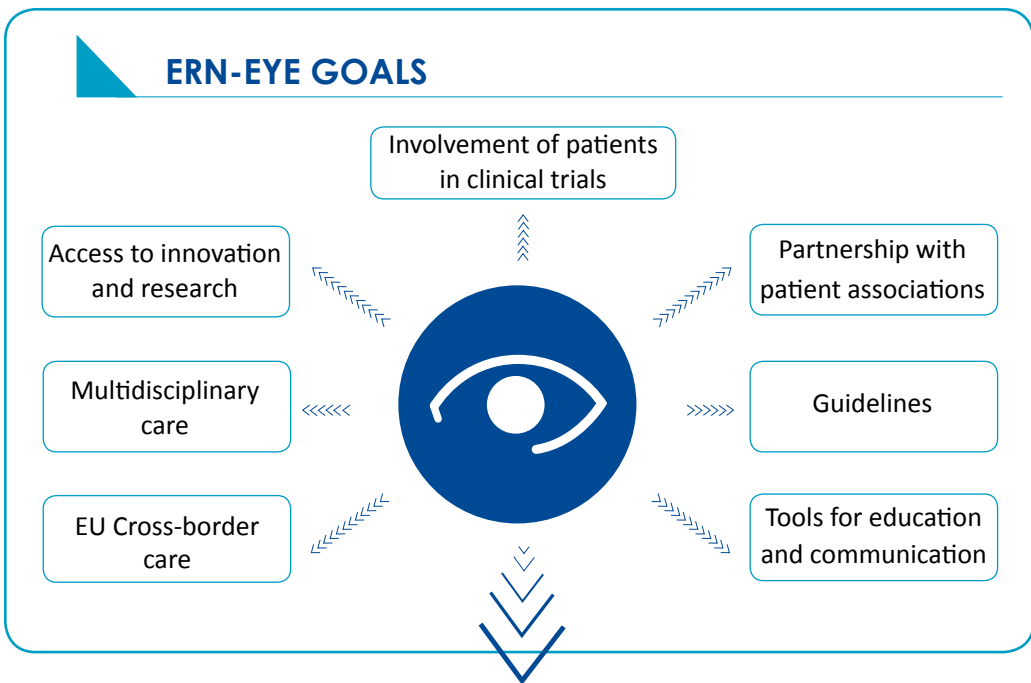


Genetic
Testing



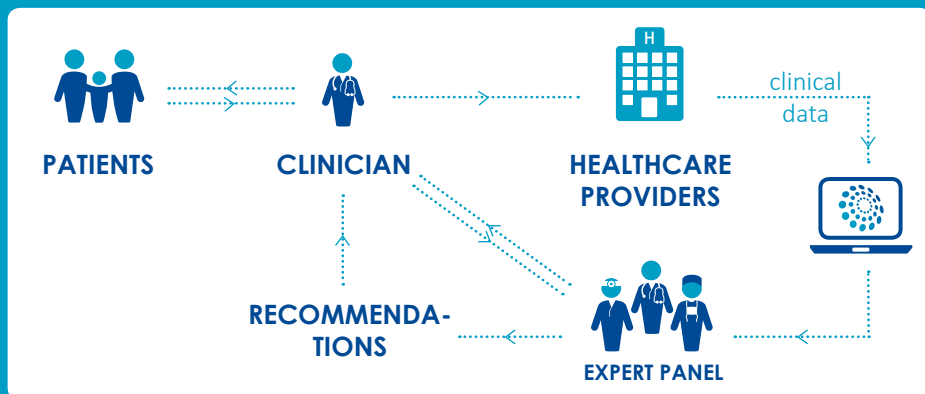
Low
Vision

ERN-EYE GOALS



CLINICAL VIRTUAL CARE

The Networks main aim is the development of a virtual clinic to facilitate **cross-border dissemination of expertise**.



FOUNDING MEMBERS

-  • University Hospital of Strasbourg, CARGO (coordinator)
- CHNO of Quinze-Vingts, Paris
- CHU of Montpellier, CR Maolya
- University Hospital NECKER, Paris, Ophtara
- CHU of Toulouse Purpan, CRNK
-  • Ghent University Hospital
-  • General University Hospital in Prague
-  • Rigshospitalet, Glostrup
-  • Eye Clinic of East Tallinn Central Hospital
-  • Universitätsklinikum Gießen and Marburg GmbH
- Eye Center, University Hospital Freiburg
- Center for Ophthalmology, University Eye Hospital, Tübingen
-  • Children's Clinical University Hospital, Riga
-  • Hospital of Lithuanian University of Health Science, Kauno Klinikos
-  • Hospital and University Center of Coimbra - CHUC
-  • Second University of Naples, Azienda Ospedaliera Universitaria
- Careggi University Hospital of Florence
- Bambino Gesù Children's Hospital of Rome
- Azienda ULSS6 Euganea, Camposanpiero
- Azienda ULSS3 Serenissima - Ospedale dell'Angelo Mestre - Fondazione Banca degli Occhi del Veneto
- University Hospital of Padua
-  • The Rotterdam Eye Hospital
- Radboud university medical center, Nijmegen
- Leiden University Medical Center
-  • Medical University in Lublin
-  • St. James's University Hospital, Leeds
- Central Manchester NHS Foundation Trust
- Oxford Eye Hospital, John Radcliffe Hospital, Oxford
- Moorfields Eye hospital, London

COORDINATOR CENTER CONTACT

✉ contact@ern-eye.eu

☎ + 33 (0)3 88 11 67 55

 Co-funded by the European Union

